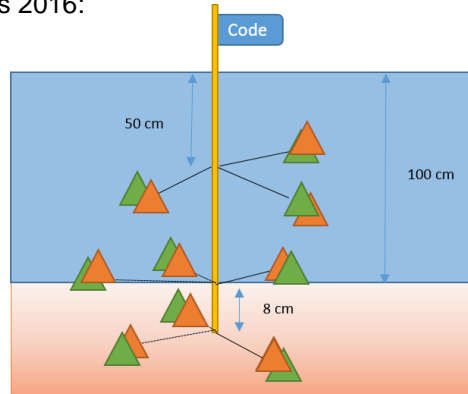


Securing the tea bags

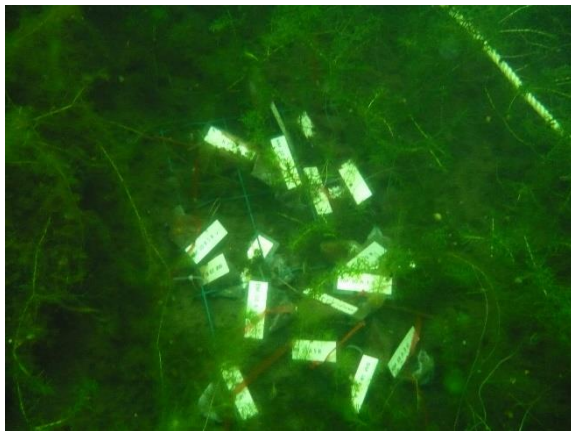
For the preparation, materials and method see Protocol ‘*Determining the rate of decomposition in lakes*’ and the Protocol ‘*Determining the rate of decomposition in lakes (advanced)*’.

Please read the entire protocol before starting! Normal health and safety precautions should be taken at all times, for more information see website: www.nioo.knaw.nl/Netlake-Citizen-Science

Example method placement TBI shore line of a lake: in water column, on top and 8cm deep in the sediment using bamboo sticks. Each stick contains 18 tea bags (3 tea pairs for each decomposition location) at the NIOO-KNAW by Utrecht University students 2016:



Example method placement TBI shore line or deeper in the lake: on top and 8cm deep in the sediment using chicken wire. A line was used to be able to find the tea bags again. From NIOO-KNAW by Utrecht University student 2015:



Example securing TBI with tent pegs as used as the NETLAKE Citizen Science workshop in Brno, Czech Republic 2016:

